

How to Quickly Identify Genuine and Fake Ginseng Extract?



Identification of Ginseng Extract

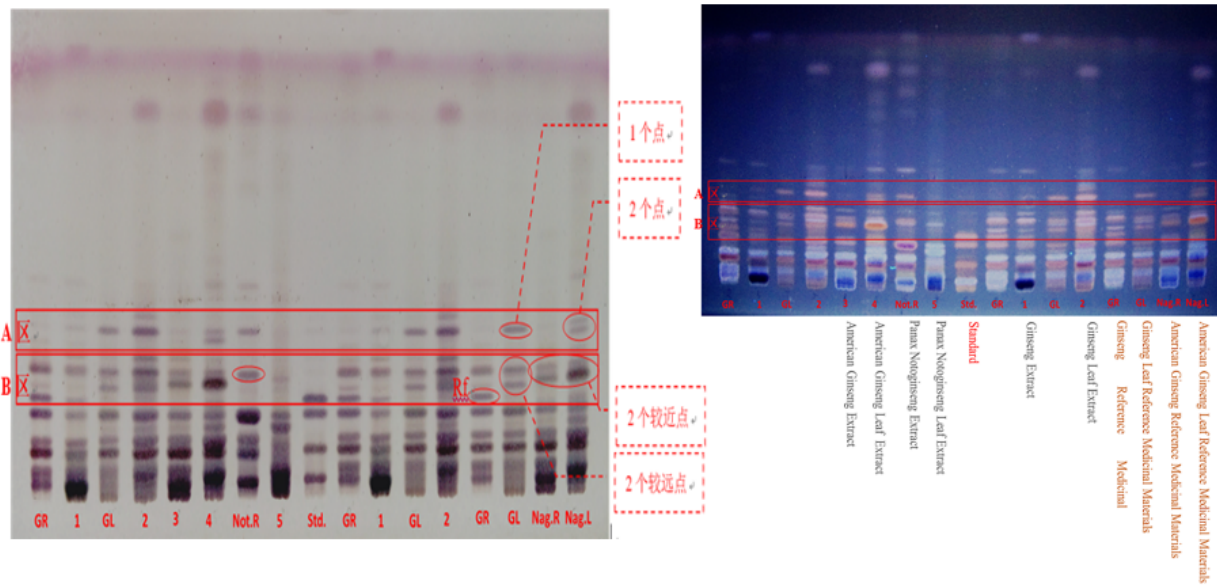
Ginseng belongs to the Araliaceae plant, and other plants belonging to the same family and different species include American ginseng, *Panax notoginseng* and others. These raw materials are also relatively common herbal medicines. Among them, because of the harsh planting conditions, the raw materials of ginseng root and *Panax notoginseng* root are the most expensive. Ginseng root/stem and leaf, American ginseng root/stem and leaf, *Panax notoginseng* root/stem and leaf all contain ginsenosides with similar components. The content of ginsenosides is often detected by the seven saponins Rg1+Re+Rf+Rb1+Rc+Rb2+Rd. The content of American ginseng is often calculated by the sum of the five saponin monomers of Rg1+Re+Rb1+Rc+Rb2+Rd. There are two algorithms for the content of *Panax notoginseng*. One is calculated by the three saponin monomers of R1+Rg1+Rb1, and the other is calculated by the sum of the five monomers of R1+Rg1+Re+Rb1+Rd. The above detection method for calculating the content by adding the sum of the saponin monomers is high performance liquid chromatography...

[Read More >>](#)

Two Common Methods

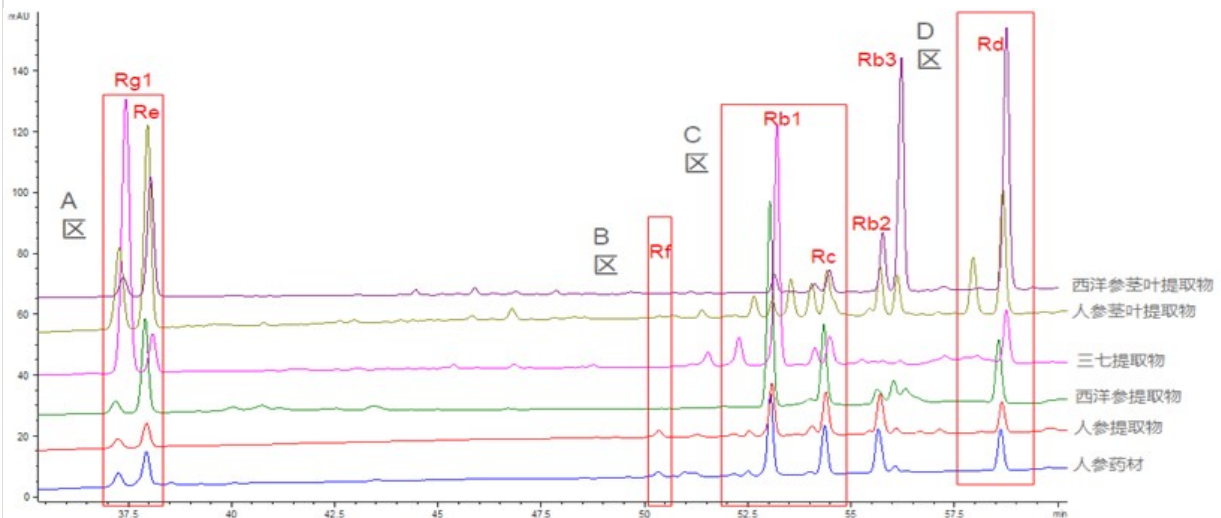
1. TLC identification

1. Comparison of similarity of chromatographic expansion diagrams.
2. The presence or absence of ginsenoside Rf spots: Ginsenoside Rf is a unique saponin component in ginseng. This method can effectively distinguish ginseng extract and from other Araliaceae source extract.



2. HPLC analysis

1. Comparison of reference medicinal materials: The extract should have peak shapes in equal proportions with the reference medicinal material at the same relative retention time.
2. Ginsenoside Rf comparison: As mentioned above, ginsenoside Rf is a unique saponin component in ginseng. Normal ginseng root extract should have a small area peak at the corresponding position, while other Araliaceae plants do not have it at the same position.
3. Comparison of index content: ginseng roots, stems and leaves come from different parts of the same plant, and the types of ginsenosides are basically the same, but the proportions of each component are quite different. This method can identify ginseng root extract and ginseng leaf extract. In response to the difficult scam of adding ginseng leaf extract to ginseng root extract, Herb Green Health can easily calculate the addition ratio of stems and leaves with the database accumulated over the years.



Herb Green Health's Low Pesticide Ginseng Extract

Since its establishment in 2011, Herb Green Health has been deeply engaged in the processing of ginseng products. It has the world's leading patented technology for removing pesticide residues, and has developed a series of ginseng extract represented with low pesticide residues. In 2019, Herb Green Health launched organic ginseng extract series. The products are sold to countries and regions with high regulatory standards such as Europe and the US. It has the most complete ginseng extract series in the world.

In recent years, Herb Green Health has made new achievements in the in-depth development of ginseng, such as rare ginsenosides represented by Rg3 and Rh2, ginseng peptides with good nutrition and absorption, black g

inseng extract with exclusive patented technology, and American ginseng extract from North American imported raw material.



New Product Recommendation



1. Excellent solubility: 5g of CLEAN-GINSENG® can be completely dissolved in 100mL of water, the dissolved solution is clear and transparent, and has excellent stability
2. Excellent taste: Compared with the bitter taste of conventional ginseng root extract, CLEAN-GINSENG® obtained more natural ginseng small molecule sugar by patented technology, which makes CLEAN-GINSENG® taste sweet and refreshing.
3. Safer nutrition: Only water is used as the processing solvent in the entire process of CLEAN-GINSENG®, and the final product is 100% from ginseng without any exogenous excipients added.

[Product Link](#)

Herb Green Health

www.herealth.com